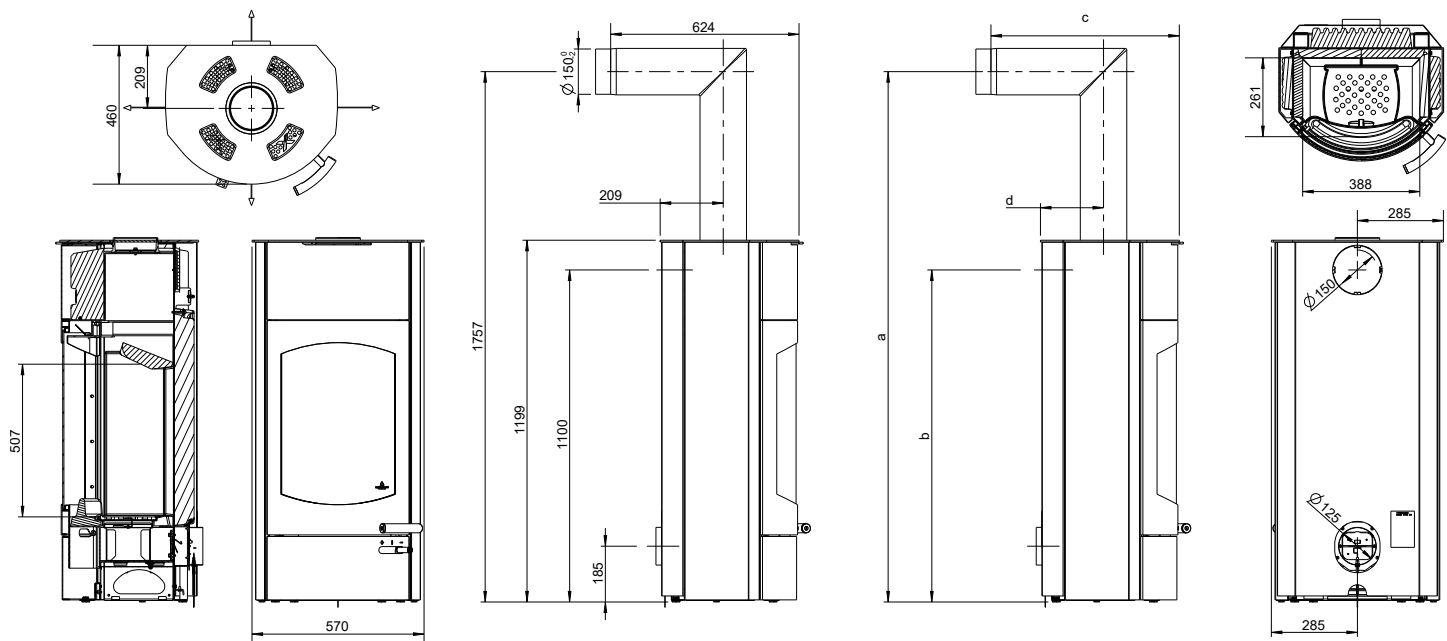


KOKO XTRA 2.0



Height [mm]	1199
Width [mm]	570
Depth [mm]	460
Combustion chamber width [mm]	388
Combustion chamber height [mm]	507
Combustion chamber depth [mm]	261
Baking compartment width [mm]	-
Baking compartment height [mm]	-
Baking compartment depth [mm]	-
Warming drawer, width [mm]	-
Warming compartment height [mm]	-
Warming drawer, depth [mm]	-
Dimensions, a (with Austroflamm elbow piece) [mm]	1757
Dimensions, b (with Austroflamm elbow piece) [mm]	1100
Dimensions, c (with Austroflamm elbow piece) [mm]	624
Dimensions, d (with Austroflamm elbow piece) [mm]	209
Flue pipe outlet, diameter [mm]	150
Outside air connection diameter [Ø mm]	125
Weight, basic appliance [kg]	76
Weight Xtra [kg]	116
Weight, HMS [kg]	-
Total weight inc. steel case (STM) [kg]	202
Total weight inc. ceramic case (KGM) [kg]	-
Total weight inc. soapstone case (SPM) [kg]	-
dR Distance rear [mm]	180
dS1 Distance left [mm]	540
dS2 Distance right [mm]	540
dP Radiation front [mm]	1200
dF Radiation to the floor [mm]	under examination
dB Distance bottom [mm]	0
dL 1 Radiation left [mm]	under examination
dL 2 Radiation right [mm]	under examination
Minimum distance from non-flammable materials [mm]	50
Nominal heat efficiency [kW]	6.0
Minimum heat output [kW]	3.5
Maximum heat output [kW]	8.0
Minimum room heating capacity [m³]	65
Maximum room heating capacity [m³]	165
Energy efficiency class	A
Xtra heat storage technology	standard
Heat Memory System	-
External air connection / operation independent of ambient air	Yes
Ash removal	Ash box
Exhaust gas mass flow [g/s]	4.43
Flue gas temperature [°C]	331
Minimum delivery pressure at nominal heat output [Pa]	12
at 0.8 times nominal heat output [Pa]	10

- not available